

PROGRESS UPDATES

**ANANDAMAYA**  
RESIDENCES

# Facade



JULY 2017



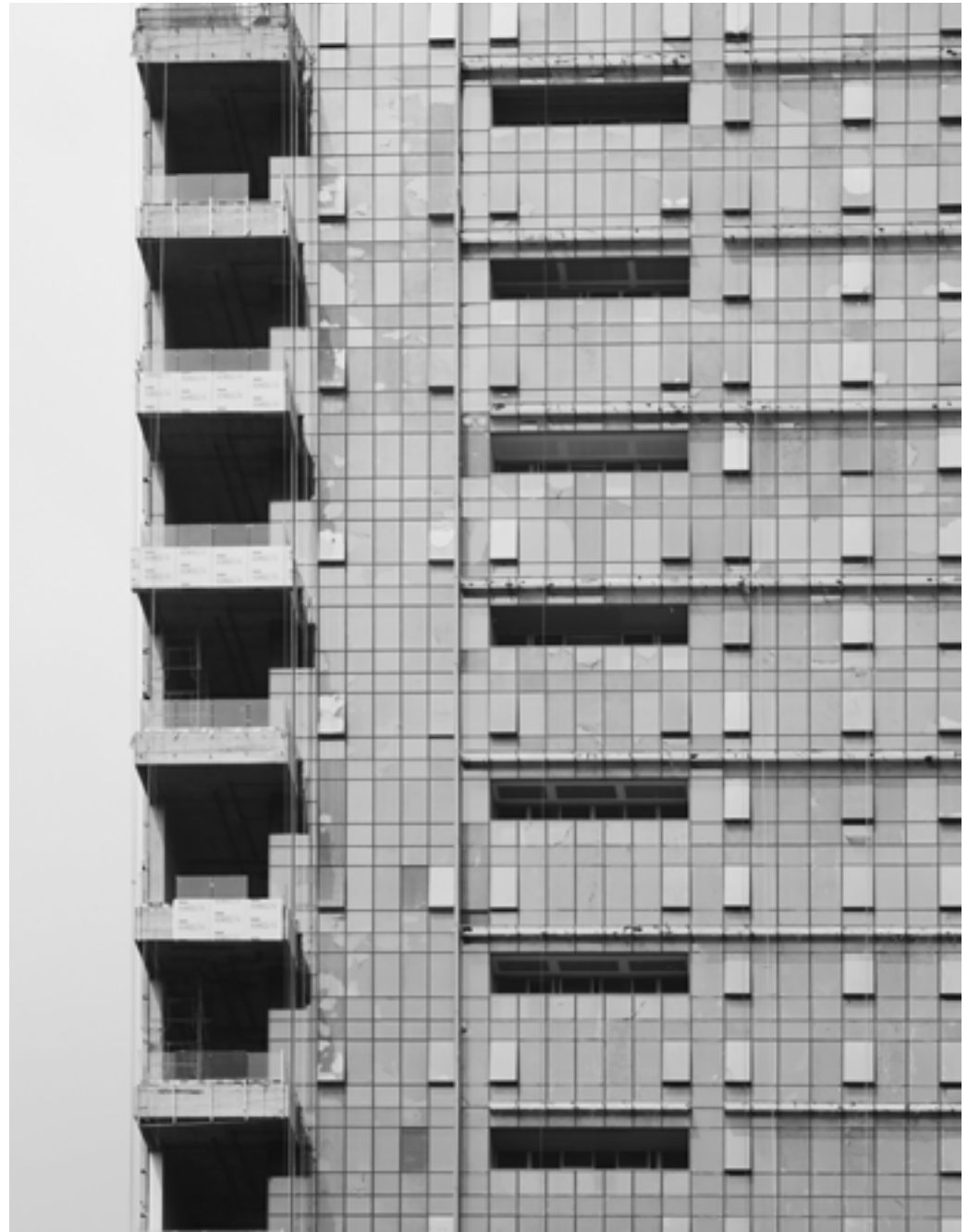
View from the west (Apartment Pavilion)



View from the north (BNI 46)



Tower 1 building facade



Window installation



Tower 2 & 3 building facade



Window installation



City view

# ANANDAMAYA

RESIDENCES

Anandamaya Residences is an initial foray of Astra International and Hongkong Land in Indonesia premium real estate market. It offers panoramic views of Jakarta CBD, high-quality finishes, private pools for select units and an expansive amenities set within a lush, landscaped environment. This sets the new standards for modern residential living in Jakarta.

+62 (21) 571-1111

[www.anandamaya-residences.com](http://www.anandamaya-residences.com)



DEVELOPED BY



**DISCLAIMER** NEITHER THE DEVELOPER NOR ITS AGENTS WILL BE HELD RESPONSIBLE FOR ANY INACCURACIES OR OMISSIONS IN THE INFORMATION CONTAINED IN THIS PHOTOS. THE DEVELOPER DOES NOT ACCEPT RESPONSIBILITY FOR ANY ERRORS OR OMISSIONS OR FOR ANY LOSSES SUFFERED BY ANY PERSON OR LEGAL ENTITY RESULTING FROM THE USE OF THE INFORMATION CONTAINED IN THIS PHOTOS, HOWSOEVER CAUSED.THE STATEMENTS, VISUAL REPRESENTATIONS, MODELS, SHOW UNITS, DISPLAYS AND ILLUSTRATIONS, PHOTOGRAPHS, ART RENDERINGS AND OTHER GRAPHIC REPRESENTATIONS AND REFERENCES ARE INTENDED TO PORTRAY ONLY ARTISTIC IMPRESSIONS OF THE DEVELOPMENT AND DÉCOR AND CANNOT BE REGARDED AS ACCURATE OR REPRESENTATIONS OF FACT. ALL AREAS AND OTHER MEASUREMENTS ARE APPROXIMATE MEASUREMENTS AND ARE SUBJECT TO CHANGE AND FINAL SURVEY.